

Building a Culture of Health in Your Community



American
Heart
Association.



Live Well
Sioux Falls

What is YOUR Vision for a Culture of Health?

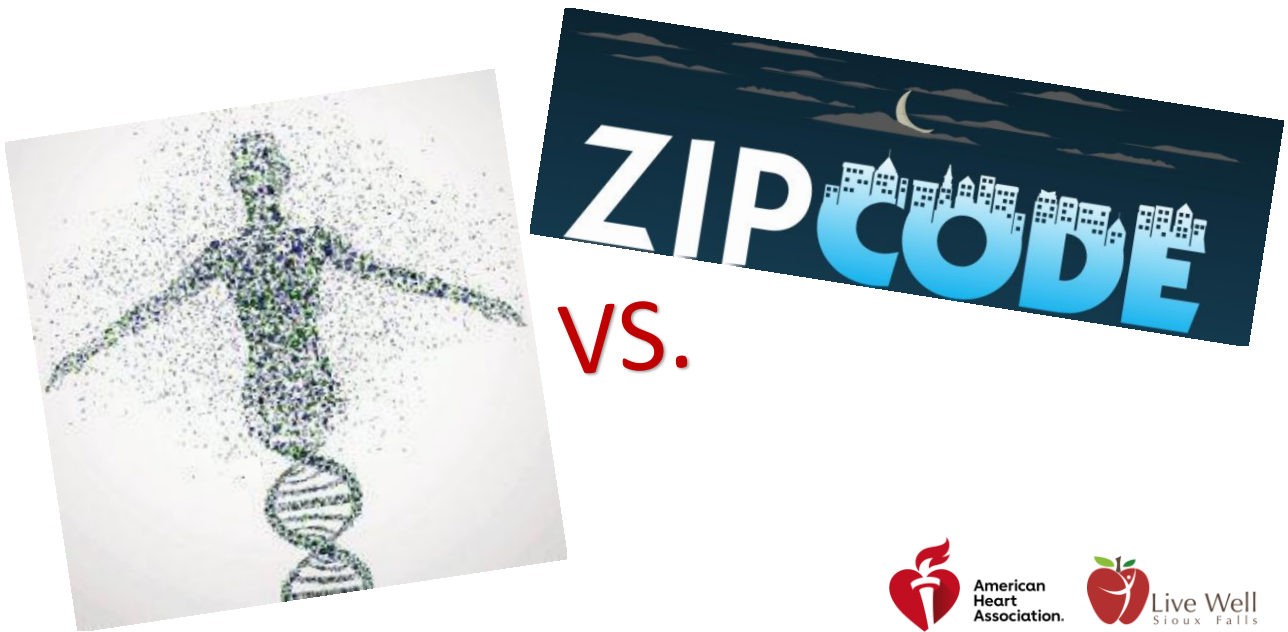


American
Heart
Association.

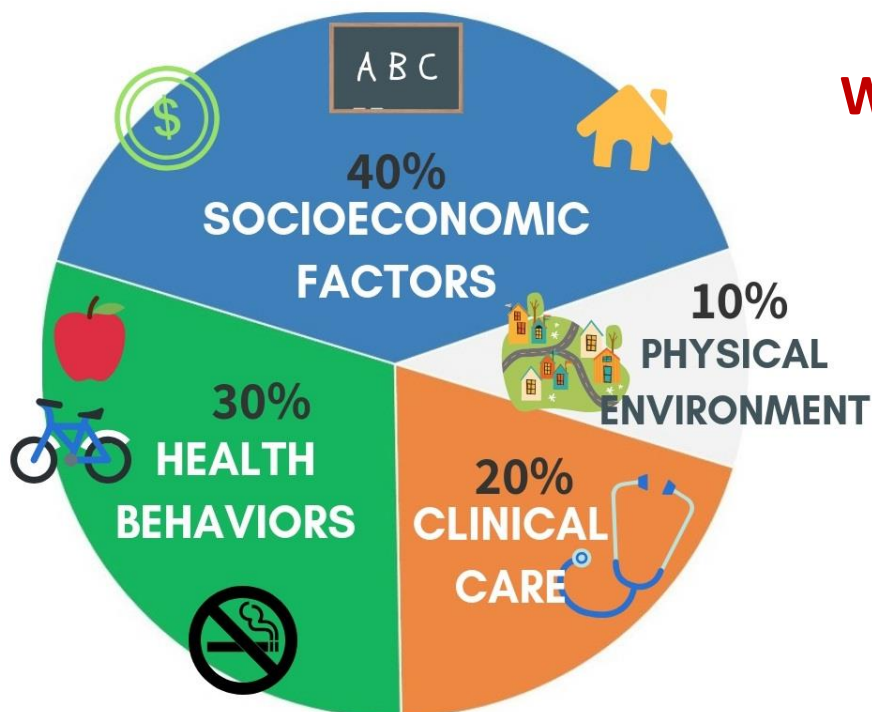


Live Well
Sioux Falls

What is the Better Predictor of Health?



What Makes Us Healthy?





Jobs



Neighborhood



Education



Nutrition



Community Support



Access to Care



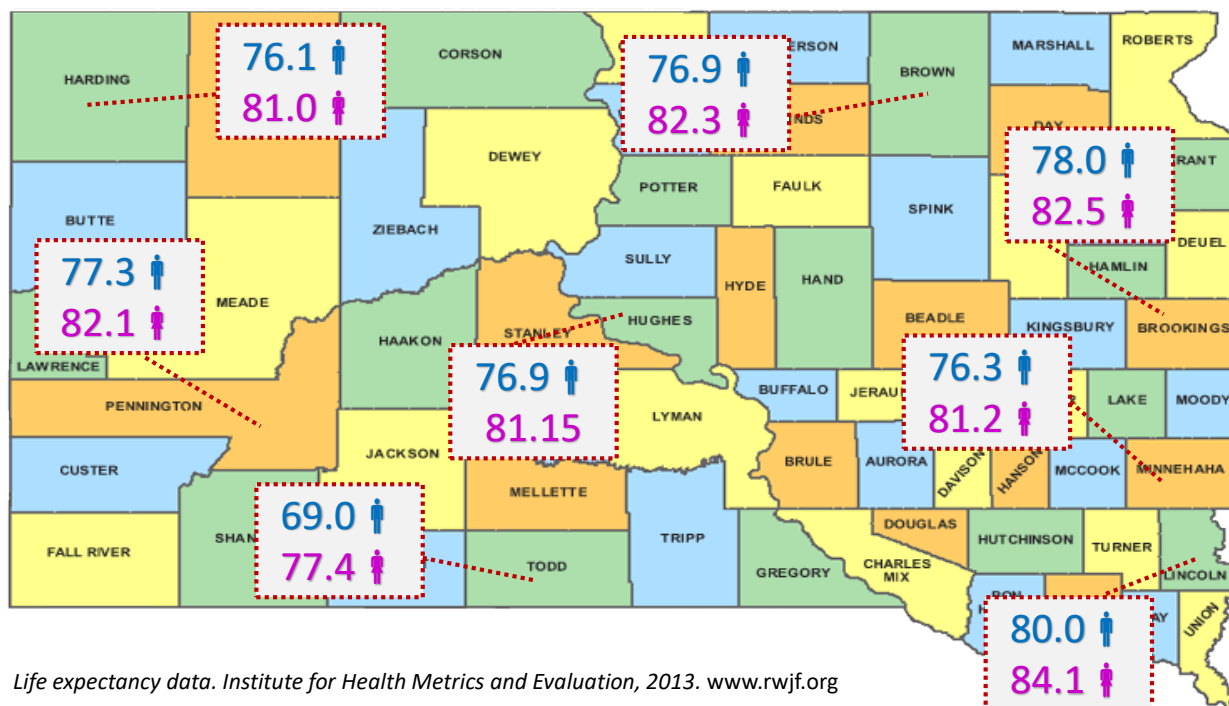
Housing



Transportation

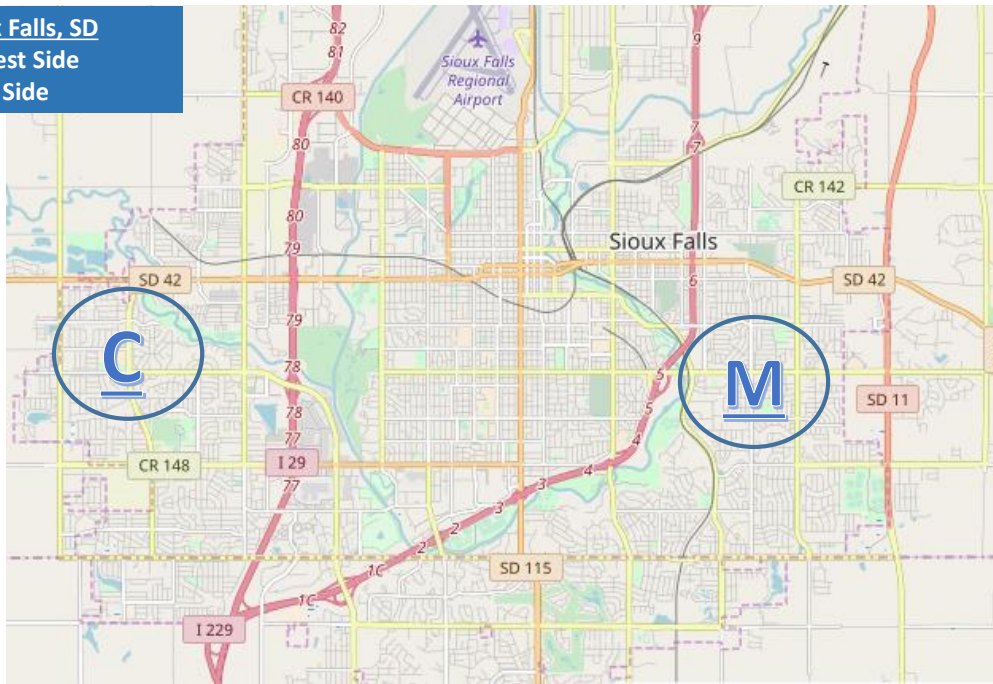
Social Determinants of Health

“the structural determinants and conditions in which people are born, grow, live, work and age.”

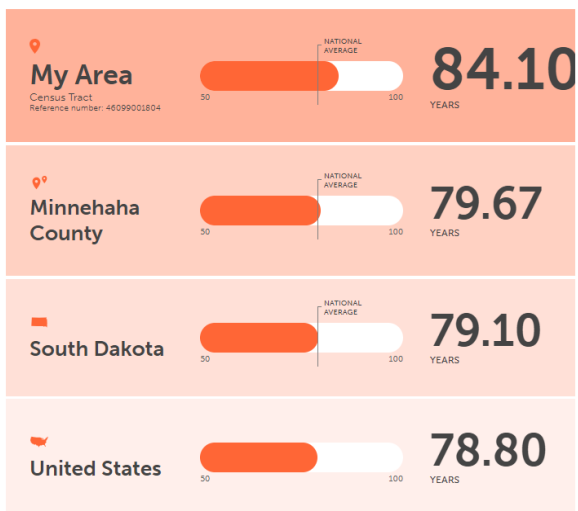
American
Heart
Association.
Live Well
Sioux Falls


Life expectancy data. Institute for Health Metrics and Evaluation, 2013. www.rwjf.org

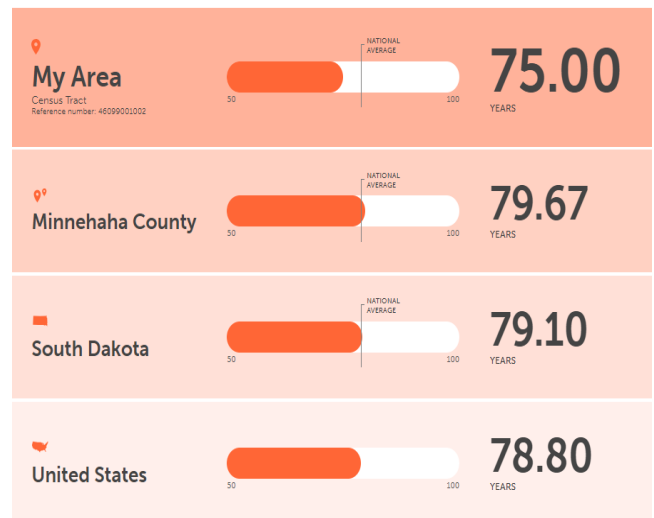
Sioux Falls, SD
Chrissy – West Side
Mary – East Side



Mary



Chrissy



<https://www.rwjf.org/en/library/interactives/whereyouliveaffectsshowlongyoulive.html>

Challenges & Hurdles



• Factors Out of Our Control

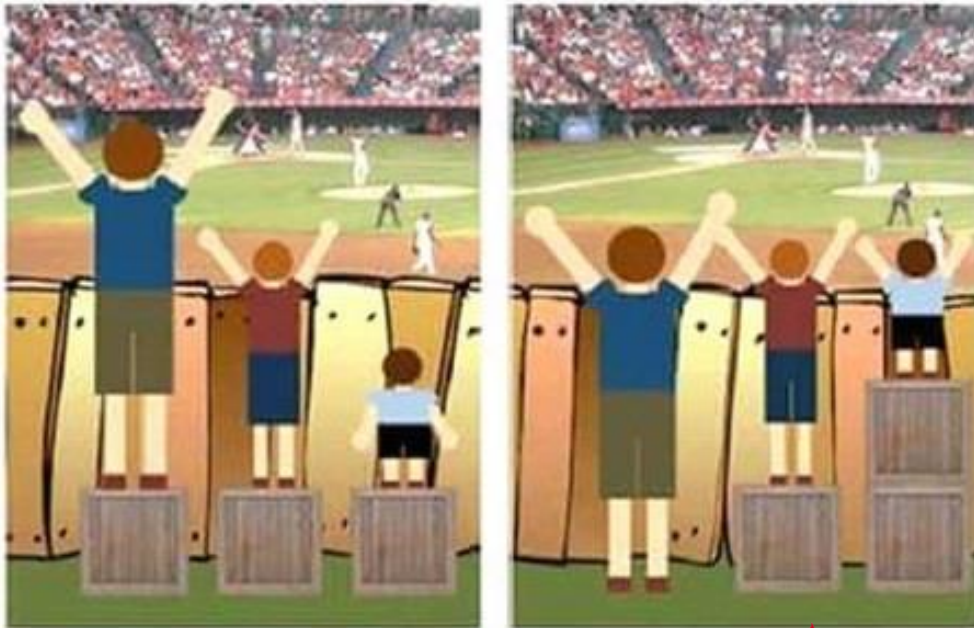
- Affordable Care Act Uncertainties
- Policy Climate
- Geography
- Community Growth or Declines
- Individual Behaviors



Equitable Health

Each person having the same opportunity to achieve optimal health





American
Heart
Association.



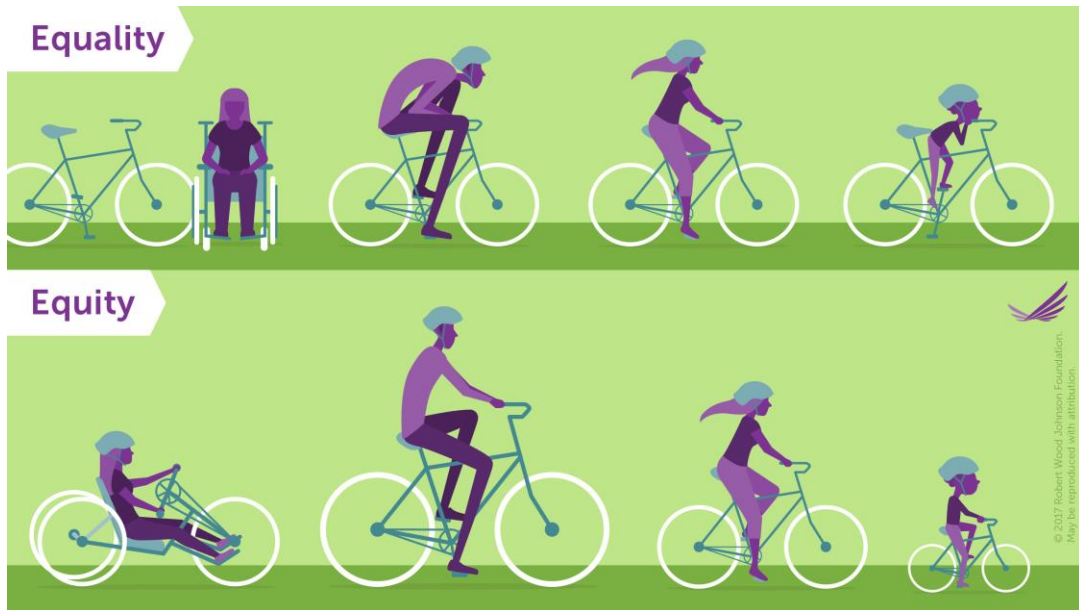
Live Well
Sioux Falls



American
Heart
Association.



Live Well
Sioux Falls



Robert Wood Johnson Foundation



American
Heart
Association.



Live Well
Sioux Falls

Why Does Equity Matter?

Health (In)Equity is Costly.



\$337 Billion

Health Equity Impacts Worksites.



Health Equity Impacts National Security.



The U.S. ranks **lower** than other wealthy nations in **age-adjusted death rates**, **infant mortality** and **life expectancy**.
Racial and ethnic disparities are found in each of these indicators



American
Heart
Association.

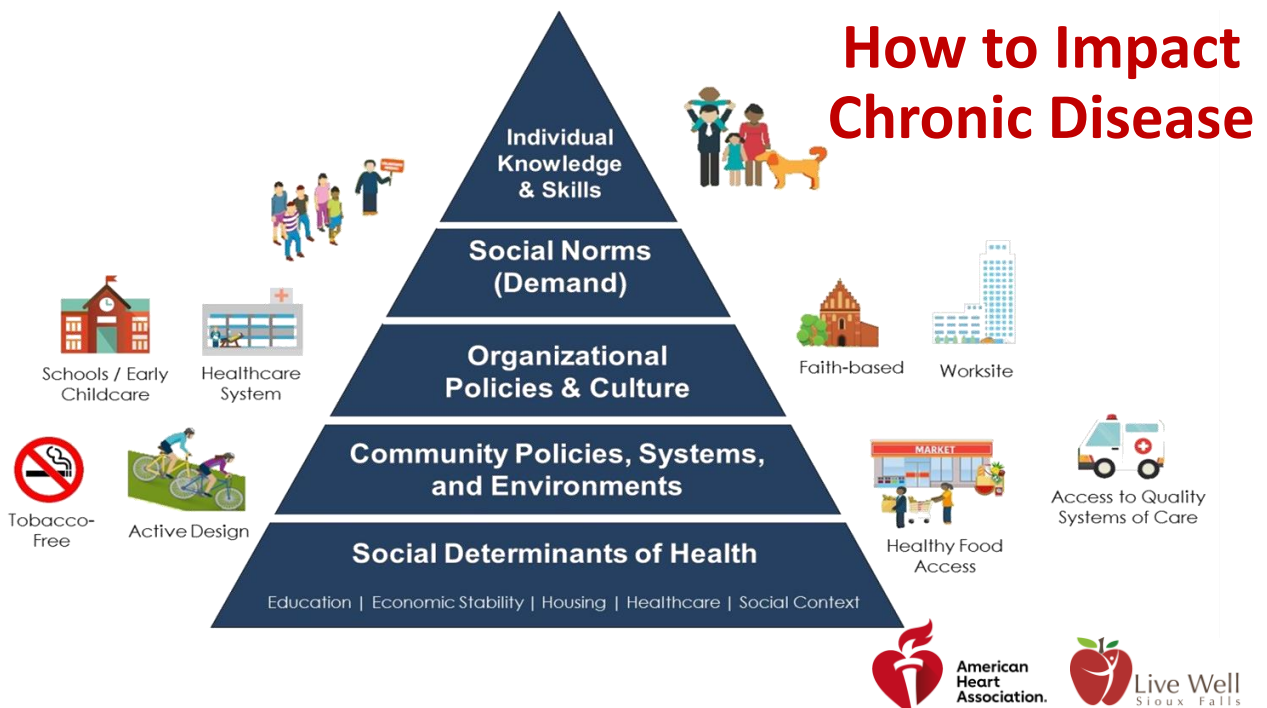


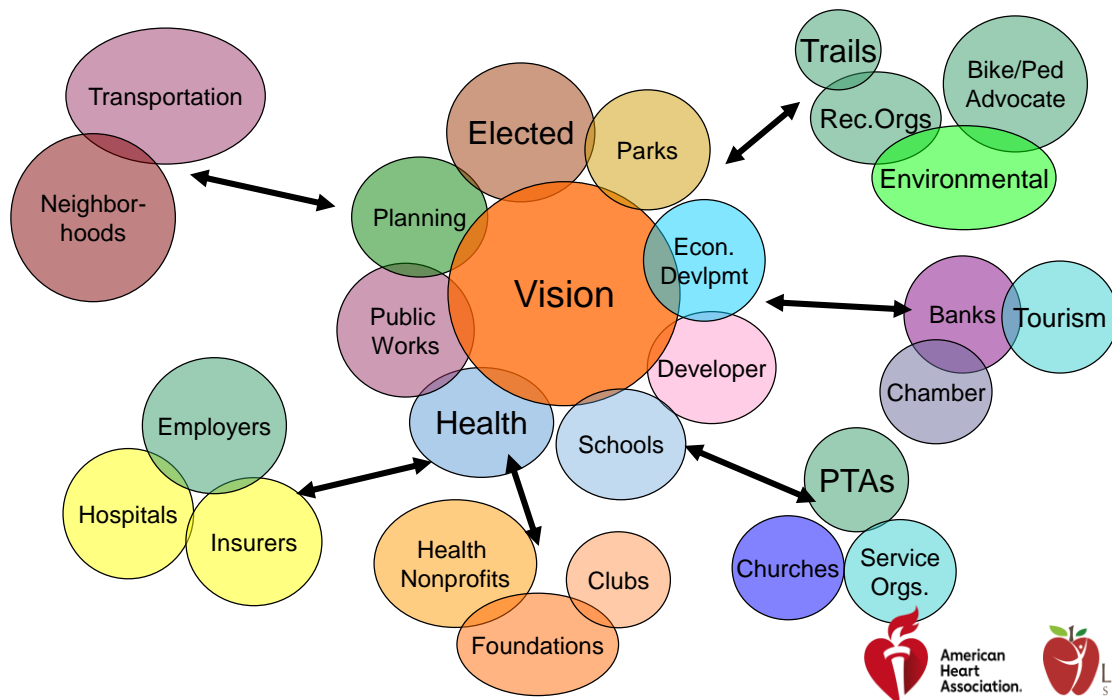
Live Well
Sioux Falls

Moving the Needle

Organized and informed community action can combat the prevalence of chronic disease, reduce health risk factors, and reduce health disparities.

- Policy, Systems & Environmental Change = Healthy Choice is the Easy Choice
- Health in All Policies



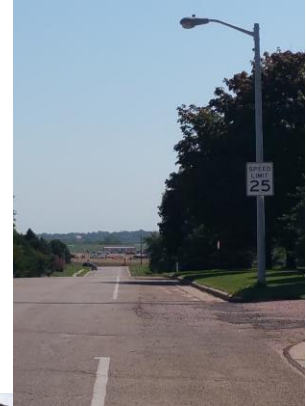


Social Determinants of Health: Hayward Neighborhood



- Geographic Challenges
- Lack of sidewalks
- No grocery store
- 80%+ of school kids eligible for free/reduced meals





Communities in Action: Pathways to Health Equity. National Academy of Sciences

- Social Determinants Matter.
- Multi-sector Collaboration is Necessary to Shape Health.
- Establish Health Equity as a Shared Vision:



American
Heart
Association.



Live Well
Sioux Falls

Resources

Good & Healthy SD

<http://goodandhealthysd.org/>

Healthy HometownSM

<http://goodandhealthysd.org/about/healthy-hometown/>

Live Well Sioux Falls Community Health Needs Assessment

<http://livewellsiouxfalls.org/about-us/>

AARP Livable Communities

<https://www.aarp.org/livable-communities/>

American Heart Association Advocacy Fact Sheets

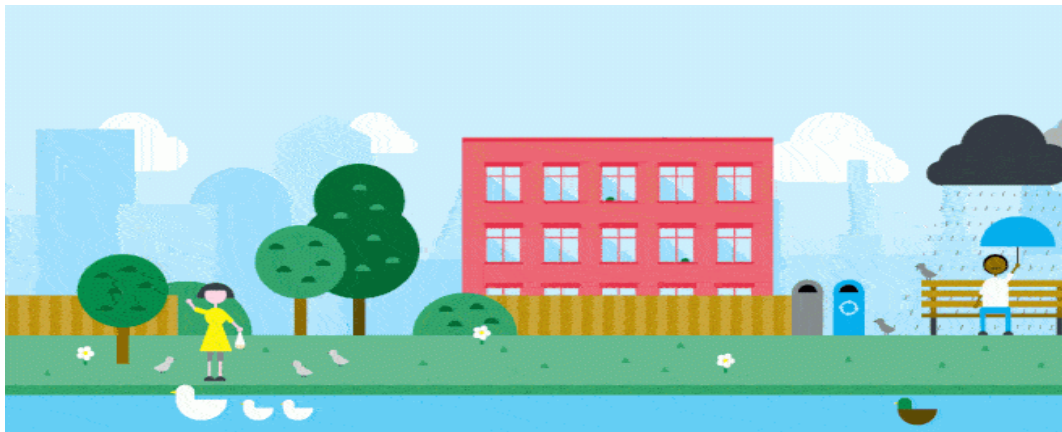
<https://www.heart.org/en/about-us/policy-research/advocacy-fact-sheets>

Collaboration for Impact (Collective Impact)

<https://www.collaborationforimpact.com/collaborative-approaches/>

Robert Wood Johnson Foundation Culture of Health

<https://www.rwjf.org/en/how-we-work/building-a-culture-of-health.html>



Chrissy Meyer

chrissy.meyer@heart.org

605-360-2542



American
Heart
Association.

Mary Michaels

mmichaels@siouxfalls.org

605-367-8286



Live Well
Sioux Falls